



MONTHLY MEMBERSHIP PROGRESS REPORT

District 2 T3

Results as of: 9/30/2014

GMT: HAL GRIFFIN

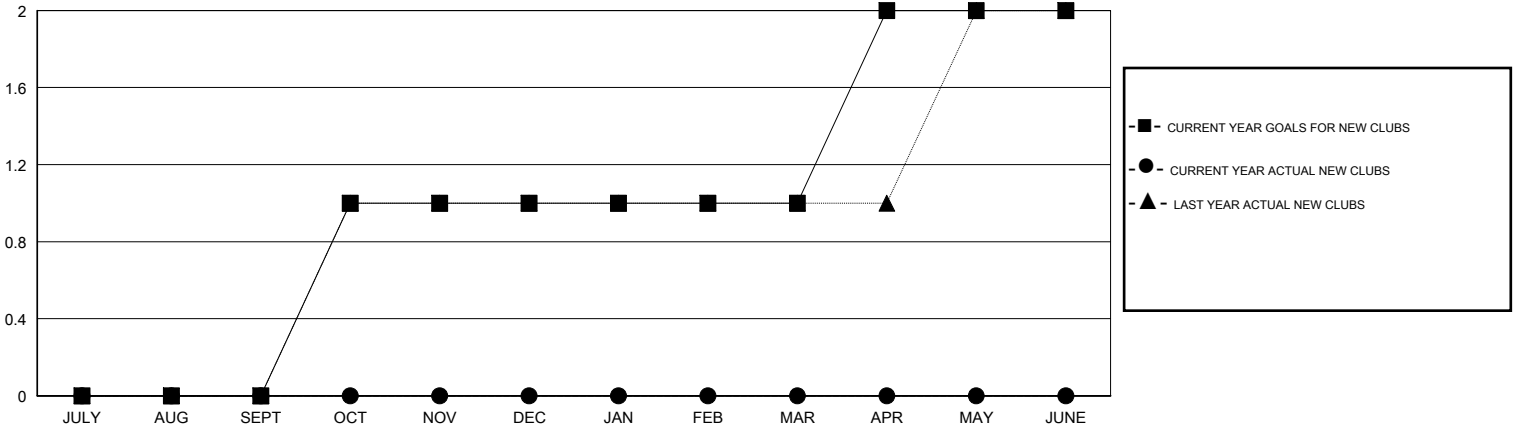
LOCATION TEXAS

GMT CA 1

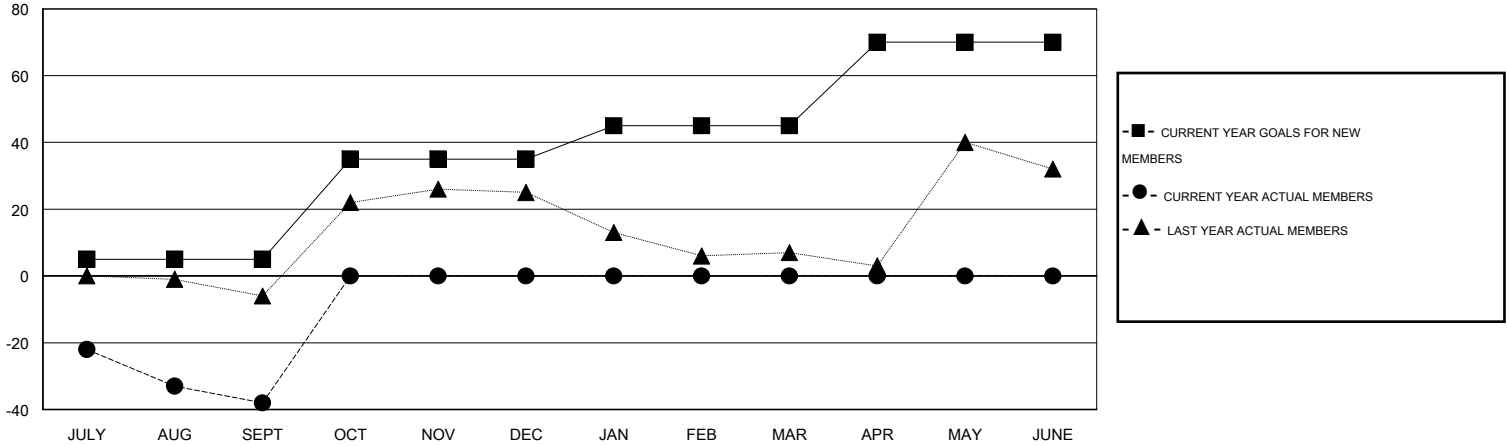
Clubs				
RESULTS FOR 2014-2015				
QUARTER	NEW CLUB GOAL	NEW CLUBS	DROPPED CLUBS	NET GAIN/LOSS
JULY/AUG/SEPT	0	0	2	-2
OCT/NOV/DEC	1	0	0	0
JAN/FEB/MAR	0	0	0	0
APR/MAY/JUNE	1	0	0	0

Members				
RESULTS FOR 2014-2015				
QUARTER	NEW MEMBER GOAL	CHARTER AND NEW MEMBERS ADDED	DROPPED MEMBERS	NET GAIN/LOSS
JULY/AUG/SEPT	5	31	69	-38
OCT/NOV/DEC	30	0	0	0
JAN/FEB/MAR	10	0	0	0
APR/MAY/JUNE	25	0	0	0

GOALS AND ACTUAL NEW CLUBS CUMULATIVE



GOALS AND ACTUAL MEMBERS CUMULATIVE



DROPPED CLUBS: 2

12 CLUBS OF 37 ADDED 1 OR MORE NEW MEMBERS

GENDER DISTRIBUTION	
MALE	535 (65.24%)
FEMALE	285 (34.76%)

DROPPED MEMBERS	
DECEASED	3
CLUB CANCELLED	0
OTHER	66
TOTAL	69

[CLICK HERE FOR HEALTH ASSESSMENT DATA](#)

FAMILY UNIT MEMBERS	128
HEAD OF HOUSEHOLD	59
NON-HEAD OF HOUSEHOLD	69